



SUPPORT

H.F. 3892 / S.F. 4180

Clean water is critical for the health of the communities & the natural environment in the Alexandria Lake Area. Improvements to **ALASD Water Reclamation Facility (WRF)** are needed to meet State of Minnesota permit requirements for nutrient reductions & protect water quality while protecting & fostering the regional economy.

OUR ASK

This \$85 million project will include advanced ultrafiltration technology to remove significant amounts of phosphorus and nitrogen, and to protect the Lake Winona-Agnes-Henry-Le Homme Dieu-Carlos chain of lakes and the Long Prairie River watershed. ALASD is requesting \$15 million for Phase 2 of the WRF project.

Environmental Protection

When nutrients such as phosphorus and nitrogen enter surface waters, it can lead to algae which is linked to fish kills and toxic algae blooms. The WRF upgrade will significantly reduce phosphorus and nitrogen to protect lake health and overall ecology.

Affordability Concerns

Estimated costs for this massive improvement project exceed \$85 million, with over half of this cost attributed to meeting stringent nutrient reduction requirements. ALASD has increased user rates by 10-12% each year over the past four years, but additional funding is necessary to maintain affordability while meeting state standards.

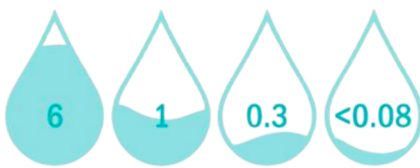
Regional Impacts

The advancements to the WRF will improve water quality, safeguarding the environment and supporting the regional economy. Protecting water quality preserves the region's property values while fostering growth for businesses, tourism, and industry.

Support Affordable & Multifamily Housing

Population growth in the Alexandria area has increased the need for more affordable and multifamily housing, which will require additional capacity in ALASD's infrastructure. ALASD serves a population of 28,000 that continues to grow.

Total Phosphorus Discharge (mg/L)



1970 1978 2006 2028

Total Nitrogen Levels (mg/L)



1970 2028

Legislative support is essential to facilitate necessary infrastructure upgrades & protect the region's water resources for generations to come.

ALASD has been a state leader in reducing nutrients in Minnesota's waters. With this project, phosphorus and nitrogen will be among lowest in state.



Scott Gilbertson, Executive Dir.
scott@alasdistrct.org



alasdistrct.org

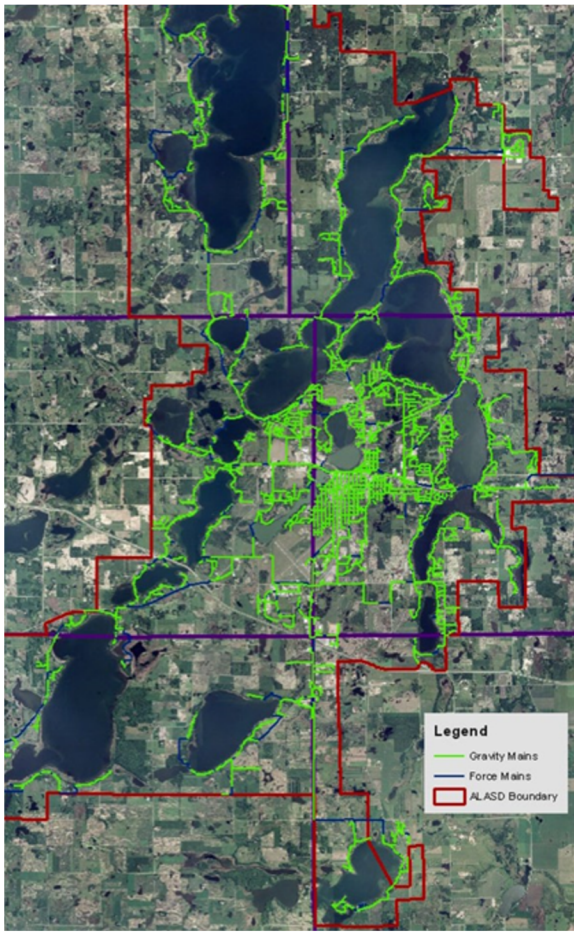
PROJECT TIMELINE

- Phase 1 construction began in August 2025.
- Phase 2 construction began in December 2026.

FUNDING UPDATE

- Costs have escalated exponentially, \$85 million is a massive project for ALASD!
- Rate increases have averaged 10-12% over the last 4 years, anticipated increases of an additional 65% is required to keep pace with escalating costs.
- \$15M will help to offset the overall debt service obligation of the project.
- ALASD is anticipating placement on the 2026 IUP for Clean Water SRF Loan.
- ALASD anticipates funding through the Point Source Implementation Grant (PSIG); and Green Project Reserve (GRP) grant funding.

ALASD Boundary Map



ALASD provides collection system conveyance & treatment services

ALASD:

- City of Alexandria
- Alexandria Township
- Carlos Township
- Hudson Township
- Ida Township
- LaGrand Township
- Lake Mary Township

ALASD contract services:

- City of Nelson
- City of Forada
- Leaf Valley Township
- Milona Township
- Carlos State Park
- Two state rest areas
- located along I-94



2201 Nevada Street SW
Alexandria, MN 56308



(320) 762-1135



alasdistrict.org

